

## DATA SHEET FOR TADANO GR-130EX ROUGH TERRAIN CRANE

Type and name of Crane : TADANO ROUGH TERRAIN CRANE (GR-130EX) RIGHT HAND DRIVE  
 Name of Manufacturer & Origin : Tadano , Japan  
 Crane Capacity : 13 TON @ 1.5 m refer to loading chart as attached  
 Completely brand new , Suitable for tropical area , dusty area ,off road ,Suitable for Iraqi fuel.

### Carrier specification:

#### Engine:

Model : Mitsubishi 4M50-TLC1B Or 4M50-TLE3A .  
 Max. power : 129 kW (172 HP) at 2,700 rpm  
 Type and description : Direct injection diesel, 4 cylinder, 4 cycle, turbo charged and after cooled  
 Numbers of cylinders (Bore x stroke) : - 4 cylinder (114 x 120 mm)  
 Total displacement : 4.9 liters.  
 Air cleaner type : Dry type , replaceable element.  
 Air intake : up to engine.  
 Fuel filter : Full flow with replaceable element with water separator.  
 Air filter : Dust And Particulate filter, inner & outer element filter.

#### Electric system

Starter motor : ( 24 volt)  
 Batteries : ( 24 V) X 2-80 AMP  
 Lights( no. & location) : 4 lights ( 2 front , 2 rear)

#### Power Train & Transmission Equipment:

Type of Transmission : Electronically controlled full automatic transmission. Torque converter driving full power shift with driving axle selector.  
 Number of speeds : 6 forward & 2 reverse  
 Maximum Traveling speed : 49 km/h

#### Suspensions:

Front (type) : Semi-elliptic leaf springs with hydraulic lockout device.  
 Rear (type) : Semi-elliptic leaf springs with hydraulic lockout device.  
 Outriggers : 4 Hydraulic , beam and jack outriggers.

#### Axle and Wheels ( mentioned according to any standard & codes ):

Drive system type driving axle 2 way selected type by manual switch , 4x2 front drive , 4x4 front and rear drive.  
 Type of Front axle , capacity : Full floating type, steering and driving axle with planetary reduction , Capacity: 7,100 Kg.  
 Type of Rear axle , capacity : Full floating type, steering and driving axle with planetary reduction, Capacity: 7,045 Kg.

ر. مهندس اقدم  
 عمار مصطفى عبد الرسول  
 رئيس اللجنة

ر. مهندس  
 ايسر محمود سليم  
 عضو

ر. مهندس  
 ماجد حاييف عبد راضي  
 عضو

ر. مهندس  
 مخد خليل اسماعيل  
 عضو

ر. مهندس  
 احسان فيصل عباس  
 عضو

DATA SHEET FOR TADANO GR-130EX ROUGH TERRAIN CRANE

SALE  
 8/11/2021

**Tire size :**

Front tire : 275/80R22.5  
Rear tire : 275/80R22.5

**Brake system:**

Service brake type : Air over hydraulic disc brakes on all 4 wheels.  
Parking & Emergency : Spring applied-air released brake acting on input shaft of front axle, Electro-pneumatic operated exhaust brake.

**Steering system:**

Steering type : Hydraulic power steering controlled by steering wheel, 4 steering modes , 2 wheel front , 2 wheel rear , 4 wheel coordinate , 4 wheel crab.  
Minimum turning radius (center of extreme outer tire) : 4 wheel steer :3.8m , 2 wheel steer :6.5m

Automatic Moment Limiter (AML-C) including: necessary instruments , indicators, monitoring systems, levers, pedals, gauges, switches and lamps.

**Boom:**

Main boom ( sections & type ) : 6 section full power partially synchronized telescoping boom of rectangular box construction with 4 sheaves at boom head  
Fully retracted length : 5.3 m  
Fully extended length : 23.8m  
Extension speed : 18.5 m in 52s  
Sheaves at boom head : 4 sheaves at boom head.  
Main Boom cylinders : 1 telescopic cylinder.

**Hoist :**

Hoist main winch: variable speed type with grooved drum driven by hydraulic axle piston motor through speed reducer. Power load lowering and raising .  
Hoisting motor type : hydraulic axial piston motor.  
Pull : maximum single line pull:29.9KN , max. permissible line pull wire strength:24.2 KN  
Line Speed (winch up) :135 m/min (7<sup>th</sup> layer).  
Hook speed (winch up) : Hoist up speed Normal 110m/min (5th layer) & High speed 155m/min (5th layer)  
Hoist auxiliary winch: variable speed type with grooved drum driven by hydraulic axle piston motor through speed reducer. Power load lowering and raising.  
Hoisting motor type : hydraulic axial piston motor.  
Pull KN : 29.9KN , max. permissible line pull wire strength:25.5 KN  
Line speed (winch up) : 135 m/min (7<sup>th</sup> layer).  
Hook speed (winch up) : Hoist up speed Normal 100m/min (3rd layer) & High speed 145m/min (3rd layer).  
Wire rope : Filler or Warrington seal wire ( spin resistance) , extra improved plow steel , performed , independent wire rope core , right regular lay.

DATA SHEET FOR TADANO GR-130EX ROUGH TERRAIN CRANE

**SARLAK**  
MACHINE

Handwritten signature and date: 11/11/2011

ر. مهندسين اقدم  
عمار مصطفى عبد الرسول  
رئيس اللجنة

ر. مهندسين  
أيسر محمود سليم  
عضو

ر. مهندسين  
ماجد حاييف عبد راضي  
عضو

ر. مهندسين  
مخالد خليل اسماعيل  
عضو

ر. مهندسين  
احسان فيصل عباس  
عضو

Main winch type : Variable speed type with grooved drum driven by hydraulic axle piston motor.  
 Diameter : 0.362 m  
 Length : 137 m .  
 Auxiliary winch type : Variable speed type with grooved drum driven by hydraulic axial piston motor  
 Diameter : 0.362 m  
 Length : 70 m.  
 Hook block capacity : 1.8 ton and 13 ton .

#### Swing system:

Swing motor Type : hydraulic axial piston motor driven through planetary speed reducer ,Continuous 360 . full circle slewing on ball bearing.  
 Swing brake : Manually locked, released slewing brake.  
 Swing speed : 2.4 ( rpm )  
 Swing lock : a positive swing lock for travel modes, manually engaged in cab.

#### Hydraulic system:

Boom elevation cylinder type : By a double acting hydraulic cylinders with holding valve.  
 Boom angle indicator.  
 Boom angle ..... -3°- 82°  
 Quantity : 1  
 Arm cylinder type : the synchronization system consist of 2 Telescopic cylinder.  
 Quantity : 2  
 Hydraulic motor drive( Quantity & type ) : 3 and axial piston motor .  
 Boom elevation Oil pump type : variable piston pumps.  
 Discharge of oil pump : Hydraulic pump (P2) displacement 45.8cm<sup>3</sup> \*P2 operating Telescoping, elevation.  
 Max. pressure of oil pump : Hydraulic cylinder for elevation : Working pressure 20.6Mpa

#### Operator Station:

Both crane and drive operations can be performed from one cab mounted on rotating superstructure.  
 Right side, 1 man type, steel construction with sliding door access and safety glass windows opening at side. Door window is powered control. Windshield glass window and roof glass window are shatter resistant . Wiper and washer (front windshield and roof window). Tinted safety glass and sun visor. Tilt-telescoping steering wheel. Adjustable control levers for slewing, boom elevating, boom telescoping, auxiliary winch, and main winch. Control levers can change neutral positions and tilt for easy access to cab. Foot operated controls: boom elevating, boom telescoping, service brake and engine throttle. 3 way adjustable operator's suspension seat with high back, headrest and armrest. Cab \_floor mat. Engine throttle knob. Hot water cab heater and air conditioning. Dash-mounted engine start/stop, monitor lamps, cigarette lighter, drive selector switch, parking brake switch, steering mode select switch, power window switch, pump engaged/disengaged switch, slewing brake switch, outrigger control panel.

#### Safety devices :

Instruments - Torque converter, oil temperature, engine water temperature, air pressure, fuel, speedometer, tachometer, hour meter and odometer / tripmeter. Engine over-run alarm. Back-up alarm. Low oil pressure/high water temp. Warning device (visual). Rear steer centering light. Hydraulic oil pressure is monitored and displayed on the AML-C display panel.

ر. مهندسين اقدم  
 عمار مصطفى عبد الرسول  
 رئيس اللجنة

ر. مهندسين  
 ايسر محمود سليم  
 عضو

ر. مهندسين  
 ماجد حاييف عبد راضي  
 عضو

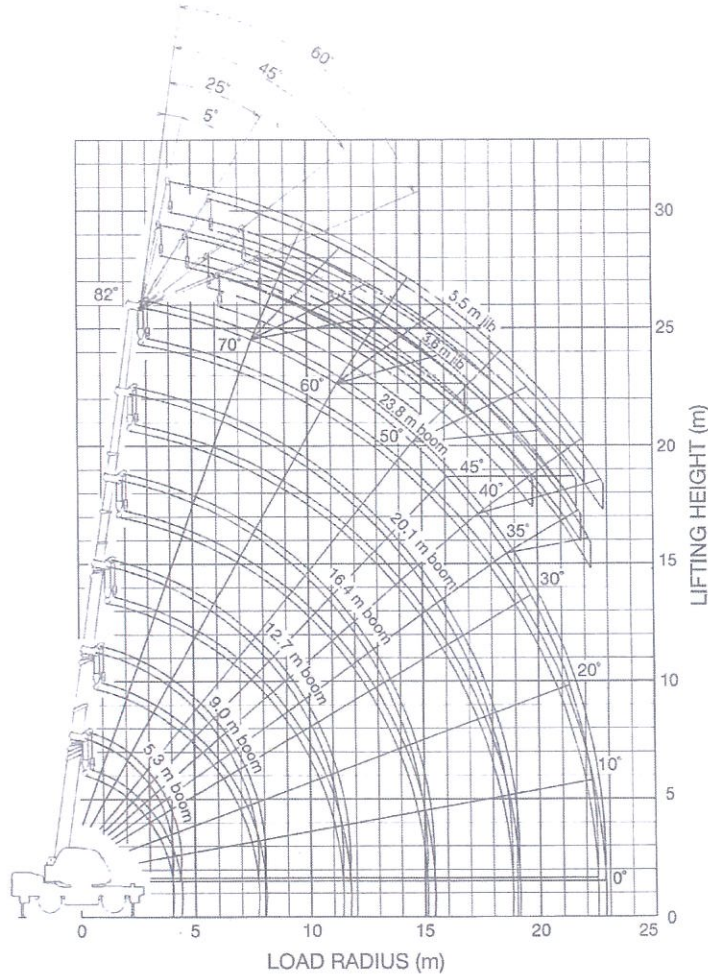
ر. مهندسين  
 مخلد خليل اسماعيل  
 عضو

ر. مهندسين  
 احسان فيصل عباس  
 عضو

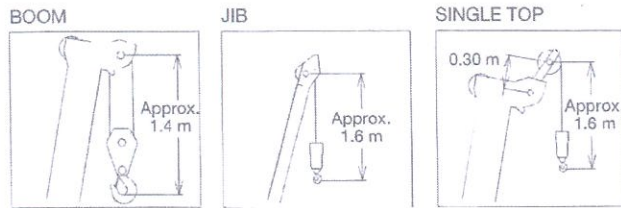


# GR-130EX WORKING RANGE CHART

5-6



**SARFIAR**  
 8/11/2021



ر. مهندسين اقدم  
 عمار مصطفى عبد الرسول  
 رئيس اللجنة

ر. مهندسين  
 ايسر محمود سليم  
 عضو

ر. مهندسين  
 ماجد حايث عبد راضي  
 عضو

ر. مهندسين  
 مخد خليل اسماعيل  
 عضو

ر. مهندسين  
 احسان فيصل عباس  
 عضو

