

DATA SHEET FOR TADANO GT-300 HYDRAULIC TRUCK CRANE

Type and name of Crane :GT-300EL , Hydraulic Truck Crane

Name of Manufacturer & Origin : Tadano , Japan

Crane Capacity : 30 Ton @ 2.5 m refer to loading chart as attached

Completely brand new , Suitable for tropical area , dusty area ,off road ,Suitable for Iraqi fuel.

1 - Carrier specification:

Engine:

Model : Daimler OM926LA (EURO3)

Max. power : 240 KW , 326HP at rpm2200

Type and description : 4 cycle , After cooled , Turbo charged ,diesel .

Numbers of cylinders(Bore x stroke) : - 6 in line (106x136)mm

Total displacement : 7.2 Liters

Air cleaner type : Dry type , replaceable element

Air intake : up to engine.

Fuel filter : Full flow with replaceable element with water separator.

Air filter : Dust And Particulate filter, inner & outer element filter.

Electric system

Alternator : 28V-80A

Starter motor : (24 volt)

Batteries : (24 V) X 120 AMP NO.2

Lights (no. & location) : 4 lights (2 Front & 2 Rear).

Power Train & Transmission Equipment:

Type of Transmission : Automatic mechanical, automatic gear shifting, electro-pneumatically operated dry-type clutch

Number of speeds : 12 forward & 2 reverse

Maximum Traveling speed : 85 (Km /hr)

Suspensions:

Front (type) : Leaf springs. Double acting shock absorbers.

Rear (type) : Hendrickson ULTIMAAX ,Rubber mounted tandem with walking beam.

Out riggers : 4 Hydraulic , beam and jack outriggers.

Axle and Wheels (mentioned according to any standard & codes):

Drive system type : 6 x 4

Type of Front axle , capacity : Reverse Elliot 1st , steering axle , Capacity: 6,750 Kg.

Type of Rear axle , capacity : full floating type ,driving axle inter wheel and inter axle differential lock. , Capacity: 22,570 Kg.

ر. مهندسين اقدم
عمار مصطفى عبد الرسول
رئيس اللجنة

ر. مهندسين
ايسر محمود سليم
عضو

ر. مهندسين
ماجد حاييف عبد راضي
عضو

ر. مهندسين
مخالد خليل اسماعيل
عضو

ر. مهندسين
احسان فيصل عباس
عضو

DATA SHEET FOR TADANO GT-300 HYDRAULIC TRUCK CRANE

SARAF
MACHINERY

Tire size :

Front tire : 295/80R22.5
Rear tire : 295/80R22.5

Brake system:

Service brake type : Dual circuit compressed air system .
Parking & Emergency : Spring loaded type on 2nd and 3th axles , auxiliary engine exhaust brake and constant throttle engine brake.

Steering system:

Steering type : ZF Servocom , mechanical hydraulically assisted of front axles
Minimum turning radius (center of extreme outer tire) : 10.5 m

Driver Station:

Type of Cabin :Driver cab two man full cab , Operator cab left side one man type.
Cabin clement control : air conditioning and heating.
Mirrors :4 mirrors (2 for driver cab , 1 for operator cab , 1 for winch drum).
Driver's seat Adjustable, seat belt : various adjustments , air cushioned ,memory function
Steering Adjustable column :Tilt telescopic steering wheel
Horn type : Electrical type.
lamps : front fog lamp

Moment limiter : Automatic moment limiter (AML-C).including all: necessary instruments , indicators, monitoring systems,levers,pedals,gauges,switches and lamps.

2 - Super structure(crane) :

Operated by same carrier engine.

Power take off:

Designed torque can Power take off (PTO) transmit : by switch bottom inside cab.

Boom:

Main boom (sections & type) : 4 section full power , partially synchronized telescoping boom of round box construction with 3 sheaves at boom head
Fully retracted length : 10.3 m
Fully extended length : 34.0 m
Extension speed : 23.7 m in 76 s
Sheaves at boom head : 3 sheaves at boom head.
Main Boom cylinders : 1 telescopic cylinder.

Hoist :

Hoist main winch: variable speed type with grooved drum driven by hydraulic axle piston motor through speed reducer. Power load lowering and raising .

Hoisting motor type : hydraulic axial piston motor.

Pull : maximum single line pull/56 KN , max. permissible line pull wire strength/55.1 KN

ر. مهندسين اقدم
عمار مصطفى عبد الرسول
رئيس اللجنة

ر. مهندسين
ايسر محمود سليم
عضو

ر. مهندسين
ماجد حايث عبد راضي
عضو

ر. مهندسين
مخاد خليل اسماعيل
عضو

ر. مهندسين
احسان فيصل عباس
عضو

Line Speed (winch up) :150 m/min (6th layer).
 Hook speed (winch up) : Hoist-up speed : 132m/min (4th layer)
 Hoist auxiliary winch: variable speed type with grooved drum driven by hydraulic axle piston m motor through speed reducer. Power load lowering and raising.
 Hoisting motor type : hydraulic axial piston motor.
 Pull KN : 56 KN, max. permissible line pull wire strength/55.1 KN
 Line speed (winch up) : 150 m/min (6th layer).
 Hook speed (winch up) : Hoist-up speed : 115m/min (2nd layer).
 Wire rope : Nuflex wire (no spin), extra improved plow steel 16mm.
 Main winch type : Variable speed type with grooved drum driven by hydraulic axle piston motor.
 Diameter : 0.32 m
 Length : for main drum 190 m .
 Auxiliary winch type : Variable speed type with grooved drum driven by hydraulic axial piston motor
 Diameter : 0.32 m
 Length : for auxiliary winch 110 m.
 Hook block capacity : 4.5 ton and 30 ton .

Swing system:






Swing motor Type : hydraulic axial piston motor driven through planetary speed reducer ,Continuous 360 . full circle slewing on ball bearing.
 Swing brake : Manually locked, released slewing brake
 Swing speed : 3 (rpm)
 Swing lock : a positive swing lock for travel modes, manually engaged in cab.
 Tail swing radius : 3295 mm

Hydraulic system:

Boom elevation cylinder type : By a double acting hydraulic cylinders with holding valve.
 Boom angle indicator.
 Boom angle -2.5°– 81°
 Boom raising speed 20° to 60° in 24 s
 Quantity : 1
 Arm cylinder type : the synchronization system consist of 1 Telescopic cylinder.
 Quantity : 1
 Hydraulic motor drive(Quantity & type) : 3 and axial piston motor .
 Boom elevation Oil pump type : variable piston pumps.
 Discharge of oil pump : 82 cm³/rev
 Max. pressure of oil pump : 250 bar

Operator Station:

Type Of Cabin :left side , one man type, steel construction with sliding door access and safety glass window opening at site , door window is powered control.
 Cabin clement control : hot water cab heater and air conditioning
 Mirrors :one mirror.
 Driver's seat Adjustable, seat belt : 3 way adjustable operator seat.
 lamps : monitor lamps, external warning lamp
 and all instrument & indicators , Levers , Pedals , Gauges , Switches , Lamps

				
ر.ه هناعين الام	ر.ه هناعين	ر.ه هناعين	ر.ه هناعين	ر.ه هناعين
عمار مصطفى عبد الرسول	أيمن محمود سليم	ماجد حاييف عبد راضي	مخاد خليل اسماعيل	احسان فيصل عباس
رئيس اللجنة	عضو	عضو	عضو	عضو



Safety devices : AML-C aids in place of good operating practice can cause an accident, the operator must exercise caution to assure safety , windshield glasses window and roof glasses window are shuttle resistance.

Truck crane Measurement:

Overall length : 12,620 mm
 Overall width : 2,550 mm
 Overall height : 3,800 mm
 Wheel Base : 6,000 mm + 1422mm
 Gross vehicle weight (G . V . W) : 29,320 kg
 Center to center of extended outriggers :
 Min. Extension 2.18 m center to center
 First Mid. Extension 4.1 m center to center
 Second Mid. Extension 5.8 m center to center
 Max. Extension 6.2 m center to center
 Float size 0.4 m x 0.3 m

Additional equipment:

Set of catalog for (maintenance & spare parts , operation (user)guide) & spare tire

Year of manufacture : : *Year by year according to order .*

And all necessary TADANO standard equipment.

DATA SHEET FOR TADANO GT-300 HYDRAULIC TRUCK CRANE

SARJAR
MACHINERY
 8/11/2021

ر. مهندسين اقدم
 عنار مصطفى عبد الرسول
 رئيس اللجنة

ر. مهندسين
 ايسر محمود سليم
 عضو

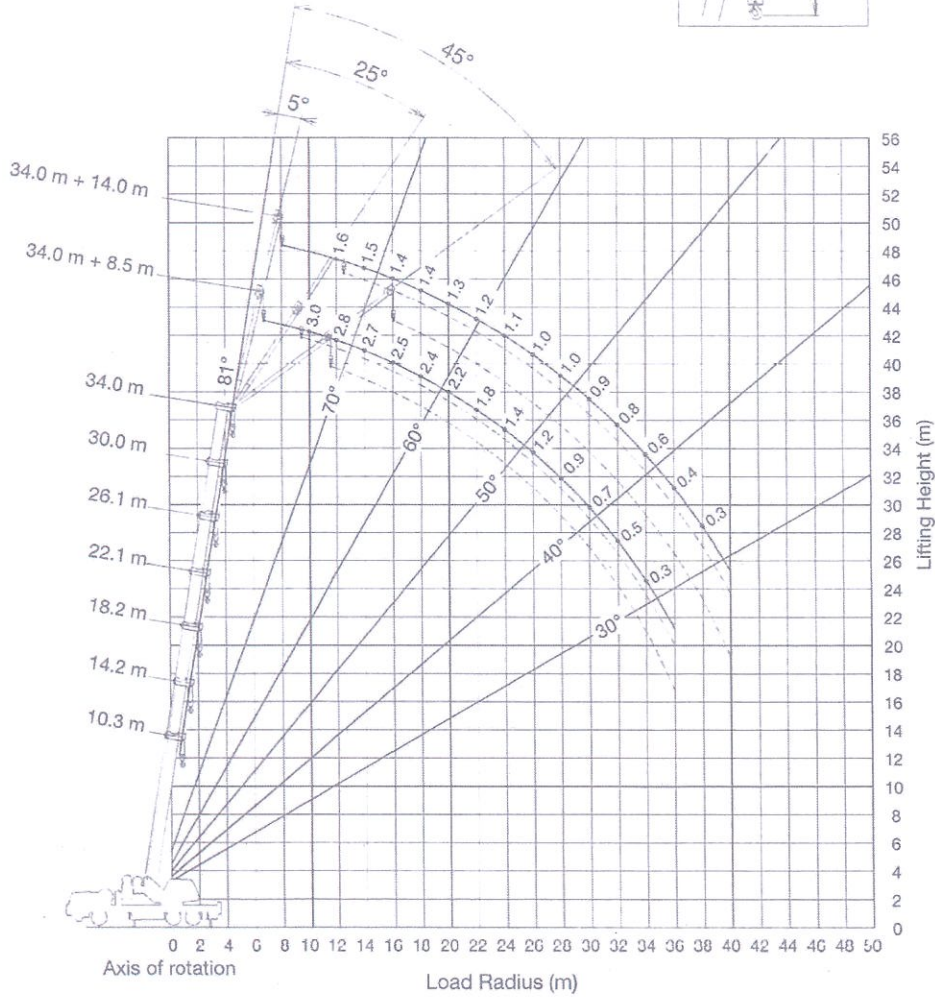
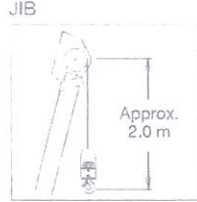
ر. مهندسين
 ماجد حاييف عبد راضي
 عضو

ر. مهندسين
 مخد خليل اسماعيل
 عضو

ر. مهندسين
 احسان فيصل عباس
 عضو

GT-300EL WORKING RANGE CHART

5-6



NOTE: Lifting height shows a calculated value.



Handwritten signature and date: 8/11/2021

 ر. مهندسين اقدم عمار مصطفى عبد الرسول رئيس اللجنة	 ر. مهندسين ايسر محمود سليم عضو	 ر. مهندسين ماجد حاييف عبد راضي عضو	 ر. مهندسين مخلد خليل اسماعيل عضو	 ر. مهندسين احسان فيصل عباس عضو
--	---	--	---	---

GT-300EL RATED LIFTING CAPACITIES

6-6

ON OUTRIGGERS FULLY EXTENDED 6.2 m SPREAD 360° ROTATION (Unit: x 1,000 kg)								
B	A	10.3	14.2	18.2	22.1	26.1	30.0	34.0
2.5		30.0	18.0					
3.0		30.0	18.0	18.0				
3.5		26.9	18.0	18.0				
4.0		23.4	18.0	18.0	13.0			
4.5		20.7	18.0	18.0	13.0	13.0		
5.0		18.5	18.0	18.0	13.0	13.0		
5.5		16.7	16.9	17.0	13.0	12.7	9.5	
6.0		15.1	15.4	15.5	13.0	12.4	9.5	
6.5		13.8	14.1	14.2	13.0	12.1	9.5	7.2
7.0		12.7	13.0	13.1	13.0	11.9	9.5	7.2
8.0		10.9	11.1	11.2	11.3	10.9	9.4	7.2
9.0			9.7	9.8	9.7	9.3	8.9	7.2
10.0			8.3	8.5	8.3	8.0	7.7	7.2
12.0			5.9	6.1	6.2	6.2	6.0	5.8
14.0				4.6	4.7	4.7	4.7	4.6
16.0				3.5	3.6	3.7	3.7	3.7
18.0					2.8	2.9	2.9	2.9
20.0					2.3	2.3	2.3	2.3
22.0						1.8	1.9	1.9
24.0						1.5	1.5	1.5
26.0							1.2	1.2
28.0							1.0	0.9
30.0								0.7
32.0								0.6
Number of parts of line		8	6	6	4	4	4	4

SARAYAR
ENGINEERING
MEMBERSHIP
8/11/2021






ر. مهندسين اقدم
 ر. مهندسين
 ر. مهندسين
 ر. مهندسين

عمار مصطفى عبد الرسول
 ايسر محمود سليم
 ماجد حاييف عبد راضي
 مخلد خليل اسماعيل
 احسان فيصل عباس

رئيس اللجنة
 عضو
 عضو
 عضو