

DATA SHEET FOR TADANO GT-600EL HYDRAULIC TRUCK CRANE

Type and name of Crane :GT-600EL , Hydraulic Truck Crane
 Name of Manufacturer & Origin : Tadano , Japan
 Crane Capacity : 60 Ton @ 2.7 m refer to loading chart as attached

Completely brand new , Suitable for tropical area , dusty area ,off road ,Suitable for Iraqi fuel.

1 - Carrier specification:

Engine:

Model : Daimler OM457LA (EURO3)
 Max. power : 260 KW , 353HP at rpm 1900
 Type and description : 4 cycle , After cooled , Turbo charged .
 Numbers of cylinders(Bore x stroke) : 6 (128x155)
 Total displacement : 11.97 Liters
 Air cleaner type : Dry type , replaceable element
 Air intake : up to engine.
 Fuel filter : Full flow with replaceable element with water separator.
 Air filter : Dust And Particulate filter, inner & outer element filter.

Electric system

Alternator : 28V – 80A
 Starter motor : (24 volt) ,
 Batteries : (24 V) X 2-120 amp
 Lights(no. & location) : 4 lights , 2 Front and 2 rear.

Power Train & Transmission Equipment:

Type of Transmission : Automatic mechanical, automatic gear shifting, electro-pneumatically operated dry-type clutch
 Number of speeds : 12 forward & 2 reverse
 Maximum Traveling speed : 85 (Km /hr)

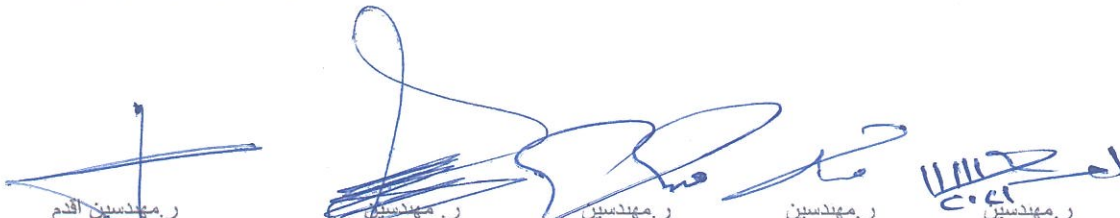
Suspensions:

Front (type) : Load sharing tandem with leaf springs. Double acting shock absorbers.
 Rear (type) : Hendrickson ULTIMAAX ,Rubber mounted tandem with walking beam.
 Out riggers : Hydraulic operated H type outriggers.

Axle and Wheels (mentioned according to any standard & codes):

Drive system type : 8x4
 Type of Front axle , capacity : Reverse Elliot 1ST , 2ND , steering axle , Capacity: 15,175Kg
 Type of Rear axle , capacity : 3rd , 4th full floating type ,driving axle inter wheel and inter axle differential lock. , Capacity: 24,505 Kg.

DATA SHEET FOR TADANO GT-600EL HYDRAULIC TRUCK CRANE



ر. مهندسين اقدم	ر. مهندسين	ر. مهندسين	ر. مهندسين	ر. مهندسين
عمار مصطفى عبد الرسول	أيسر محمود سليم	ماجد حاييف عبد راضي	مخاد خليل اسماعيل	احسان فيصل عباس
رئيس اللجنة	عضو	عضو	عضو	عضو

Tire size :

Front tire : 315/80R22.5
Rear tire : 315/80R22.5

Brake system:

Service brake type : Dual circuit compressed air system brake .
Parking &Emergency : Spring loaded brake on 3rd and 4th axles , auxiliary engine exhaust brake and constant throttle engine brake.

Steering system:

Steering type : ZF Servocom hydraulic steering with emergency steering pump, mechanical hydraulically assisted of front 2 axles .

Minimum turning radius (center of extreme outer tire) : 11.7 m

Driver Station:

Type Of Cabin : Driver cab two man full cab , Operator cab left side one man type.
Cabin clement control : air conditioning and heating.
Mirrors : 4 mirrors (2 for driver cab , 1 for operator cab , 1 for winch drum).
Driver's seat Adjustable, seat belt : various adjustments , air cushioned.
Steering Adjustable column : Tilt telescopic steering wheel
Horn type : Electrical type.
lamps : front fog lamp

Moment limiter : Automatic moment limiter (AML-C).including all: necessary instruments , indicators, monitoring systems,levers,pedals,gauges,switches and lamps.

2 - Super structure(crane) :

Operated by same carrier engine.

Power take off:

Designed torque can Power take off (PTO) transmit : by switch bottom inside cab.

Boom:

Main boom (sections & type) : 5 section full power , partially synchronized telescoping boom of round box construction with 5 sheaves at boom head
Fully retracted length : 11.0 m
Fully extended length : 43.0 m
Extension speed : 32 m in 150 s
Sheaves at boom head : 5 sheaves at boom head.
Main Boom cylinders : 1 telescopic cylinder.

Hoist:

Hoist main winch: variable speed type with grooved drum driven by hydraulic axle piston motor through speed reducer. Power load lowering and raising
Hoisting motor type : hydraulic axial piston motor.
Pull : maximum single line pull:56 kN , max. permissible line pull wire strength:55.1 kN
Line Speed (winch up) : 150m/min (6th layer).
Hook speed (winch up) : Hoist-up speed : 132m/min (4th layer).

ر. مهندسين القدم
عمار مصطفى عبد الرسول
رئيس اللجنة

ر. مهندسين
أيسر محمود بلليم
عضو

ر. مهندسين
ماجد حاييف عبد راضي
عضو

ر. مهندسين
مخاد خليل اسماعيل
عضو

ر. مهندسين
احسان فيصل عباس
عضو

SADRA
MACHINERY
8/11/2021

Hoist auxiliary winch: variable speed type with grooved drum driven by hydraulic axle piston m motor through speed reducer. Power load lowering and raising
 Hoisting motor type : hydraulic axial piston motor.
 Pull KN : : maximum single line pull: 56 kN , max. permissible line pull wire strength/55.1 kN.
 Line speed (winch up) : 150 m/min (6th layer).
 Hook speed (winch up) . Hoist-up speed . 115m/min (2nd layer)
 Wire rope : Nuflex wire (no spin), extra improved plow steel 16mm.
 Main winch type : Variable speed type with grooved drum driven by hydraulic axle piston motor.
 Diameter : 0.32m
 Length : for main drum 235 m
 Auxiliary winch type : Variable speed type with grooved drum driven by hydraulic axial piston motor
 Diameter : 0.32m
 Length : 127 m
 Hook block capacity : 4,5 ton and 60 ton .

Swing system:

Swing motor Type : hydraulic axial piston motor driven through planetary speed reducer ,Continuous 360 . full circle slewing on ball bearing.
 Swing brake : Manually locked ,released slewing brake
 Swing speed (rpm) : 1.6 rpm
 Swing lock : a positive swing lock for travel modes, manually engaged in cab
 Tail swing radius : 3640 mm

Hydraulic system:

Boom elevation cylinder type : : By a double acting hydraulic cylinders with holding valve.
 Boom angle indicator.
 Boom angle -3.7°– 80.5°
 Boom raising speed 10° to 70° in 50 s
 Quantity : 1
 Arm cylinder type : the synchronization system consist of 2 Telescopic cylinder.
 Quantity : 2
 Hydraulic motor drive(Quantity & type) : 3 and axial piston motor.
 Boom elevation Oil pump type : variable piston pumps
 Discharge of oil pump : Hydraulic pump (P2) displacement 82cm³ *P2 operating Telescoping, elevation
 Max. pressure of oil pump: Hydraulic cylinder for elevation working pressure 24.5Mpa

Operator Station:

Type of Cabin :left side , one man type, steel construction with sliding door access and safety glass window opening at site , door window is powered control.
 Cabin clement control : hot water cab heater and air conditioning
 Mirrors :one mirror.
 Driver's seat Adjustable, seat belt : 3 way adjustable operator seat.
 lamps : monitor lamps, external warning lamp.
 and all instrument & indicators, Levers , Pedals , Gauges , Switches , Lamps

ر. مهندسين اقدم
 عمار مصطفى عبد الرسول
 رئيس اللجنة

ر. مهندسين
 أيسر محمود سليم
 عضو

ر. مهندسين
 ماجد حاييف عبد راضي
 عضو

ر. مهندسين
 مخلد خليل اسماعيل
 عضو

ر. مهندسين
 احسان فيصل عباس
 عضو

11/11/2021
 SARLAP
 MACHINERY

Safety devices : AML-C aids in place of good operating practice can cause an accident, the operator must exercise caution to assure safety , windshield glasses window and roof glasses window are shuttle resistance.

Truck crane Measurement:

Overall length : 13,140 mm

Overall width : 2,800 mm

Overall height : 3,780 mm

Wheel Base : 1498 mm + 3991mm + 1422mm .

Gross vehicle weight (G . V . W) : 39,680 kg

Center to center of extended outriggers :

Min. Extension 2.51 m center to center

First Mid. Extension 4.7 m center to center

Second Mid. Extension 6.5 m center to center

Max. Extension 7.0 m center to center

Additional equipment:

Set of catalog for (maintenance & spare parts , operation (user)guide)& spare tire>

Year of manufacture : Year by year according to order .

And all necessary TADANO standard equipments

DATA SHEET FOR TADANO GT-600EL HYDRAULIC TRUCK CRANE

SARDAR
MACHINERY

8/11/2021

ر. مهندسين اقدم
عمار مصطفى عبد الرسول
رئيس اللجنة

ر. مهندسين
أيسر محمود سليم
عضو

ر. مهندسين
ماجد حاييف عبد راضي
عضو

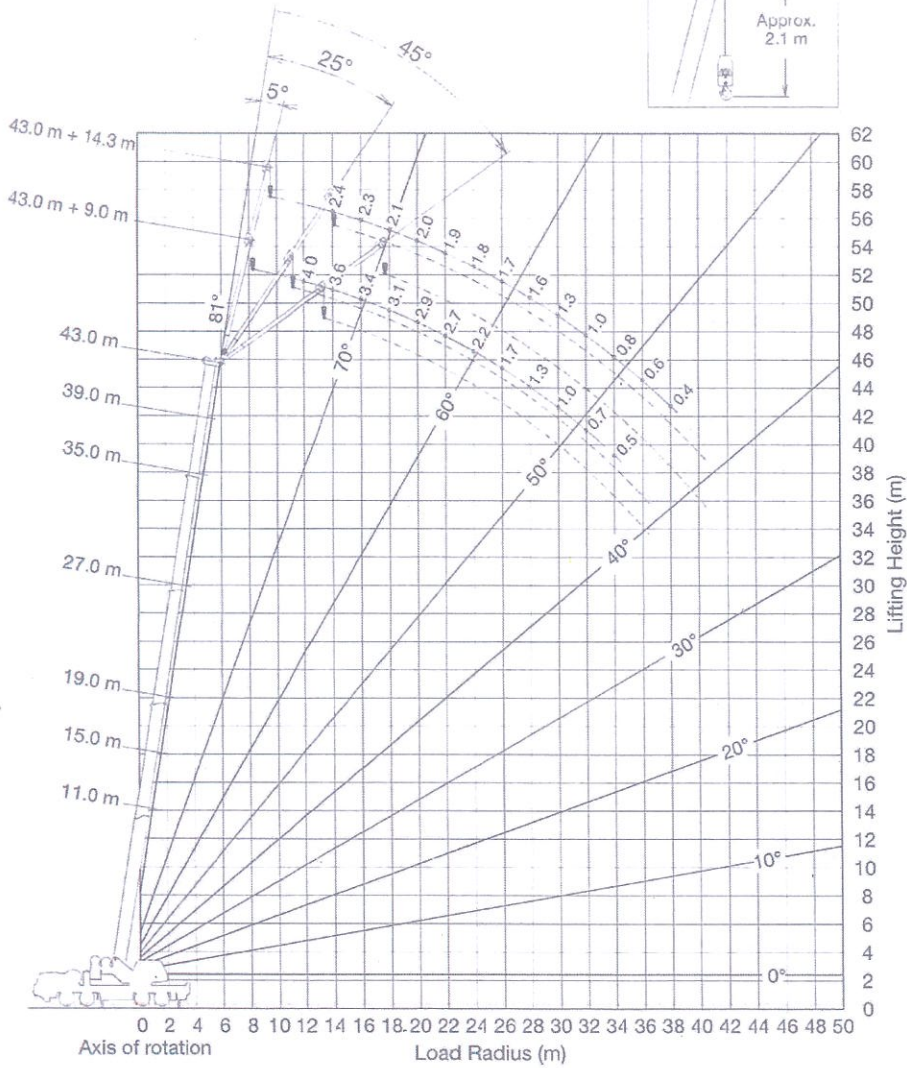
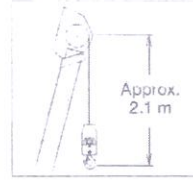
ر. مهندسين
مخلد خليل اسماعيل
عضو

ر. مهندسين ع.ع.
احسان فيصل عباس
عضو

GT-600EL WORKING RANGE CHART

5-6

JIB



SARFAR
 22/11/2021
 8/11/2021

NOTE: Lifting height shows a calculated value.
 When boom length is same as telescoping mode I and II it show large load.

ر. مهندسين اقدم
 عماد مصطفى عيد الرسول
 رئيس اللجنة

ر. مهندسين
 امير محمود سليم
 عضو

ر. مهندسين
 ماجد حاييف عبد راضي
 عضو

ر. مهندسين
 مخد خليل اسماعيل
 عضو

ر. مهندسين
 احسان فيصل عباس
 عضو

GT-600EL RATED LIFTING CAPACITIES

6-6

ON OUTRIGGERS FULLY EXTENDED 7.0 m SPREAD 360° ROTATION (Unit: x 1,000 kg)											
B	A	11.0	15.0	19.0		27.0		35.0		39.0	43.0
2.7		60.0	40.8								
3		55.0	40.8	32.0	22.0						
3.5		47.3	40.8	32.0	22.0						
4		42.2	40.8	32.0	22.0						
4.5		37.8	37.6	32.0	22.0						
5		34.2	33.9	32.0	22.0	22.0	17.0				
5.5		31.1	30.9	30.3	22.0	22.0	17.0				
6		28.5	28.2	26.5	22.0	22.0	17.0				
6.5		26.2	25.9	23.5	22.0	21.7	16.8				
7		24.3	23.0	20.9	22.0	19.6	16.2	14.0	12.0		
7.5		22.1	20.7	18.8	21.4	17.9	15.7	14.0	12.0		
8		19.5	18.7	17.0	19.6	16.3	15.2	14.0	11.9	10.0	
9	15.6	15.1	13.9	16.5	13.6	14.0	12.9	11.2	10.0	9.0	9.0
10		12.3	11.6	14.1	11.5	12.8	11.1	10.7	10.0	9.0	9.0
11		10.0	9.7	11.9	9.9	11.5	9.6	10.0	10.0	9.0	9.0
12		8.3	8.0	10.1	8.5	10.1	8.4	9.2	8.8	8.1	8.1
14			5.5	7.5	6.5	8.0	6.6	7.7	7.0	6.4	6.4
16			3.9	5.8	4.8	6.2	5.2	6.3	5.7	5.1	5.1
18					3.6	4.9	4.1	5.1	4.7	4.2	4.2
20					2.7	4.0	3.2	4.1	3.8	3.4	3.4
22					2.0	3.2	2.4	3.4	3.0	2.7	2.7
24					1.4	2.6	1.9	2.8	2.4	2.1	2.1
26							1.4	2.3	1.9	1.6	1.6
28							1.0	1.9	1.5	1.2	1.2
30							0.6	1.5	1.2	0.9	0.9
32								1.2	0.9	0.6	0.6
34									0.6		
Telescoping Mode	I, II	I	I	II	I	II	I	II	II	I, II	
Number of parts of line	15	10	8	6	6	4	4	4	4	4	4

SARHAR
MACHINES
20/11/2021
8/11/2021

ر. مهندسين اقدم
عمار مصطفى عبد الرسول
رئيس اللجنة

ر. مهندسين
ابنر محمود سليم
عضو

ر. مهندسين
ماجد حايه ، عبد راضي
عضو

ر. مهندسين
مجدو خليل اسماعيل
عضو

ر. مهندسين
احسان فيصل عباس
عضو