

## DATA SHEET FOR TADANO GT-750EL HYDRAULIC TRUCK CRANE

Type and name of Crane : GT-750EL , Hydraulic Truck Crane  
 Name of Manufacturer & Origin : Tadano , Japan  
 Crane Capacity : 75 Ton @2.7 m refer to loading chart as attached

Completely brand new , Suitable for tropical area , dusty area ,off road ,Suitable for Iraqi fuel.

### 1 - Carrier specification:

#### Engine:

Model : Daimler OM457LA (EURO3)  
 Max. power : 260 KW , 353 HP at rpm1900  
 Type and description : 4 cycle , After cooled , Turbo charged .  
 Numbers of cylinders(Bore x stroke) : - 6 (128x155)  
 Total displacement : 11.97 Liters  
 Air cleaner type : Dry type , replaceable element  
 Air intake : up to engine.  
 Fuel filter : Full flow with replaceable element with water separator.  
 Air filter : Dust And Particulate filter, inner & outer element filter.

#### Electric system

Alternator : 28V – 80 A.  
 Starter motor : ( 24 volt) ,  
 Batteries : ( 24 V) X 2-120 amp  
 Lights( no. & location) : 6 lights , Front and fog lamp.

#### Power Train & Transmission Equipment:

Type of Transmission : Automatic mechanical, automatic gear shifting, electro-pneumatically operated dry-type clutch  
 Number of speeds : 12 forward & 2 reverse  
 Maximum Traveling speed : 85 ( Km /hr)

#### Suspensions:

Front (type) : Load sharing tandem with leaf springs. Double acting shock absorbers.  
 Rear (type) : Hendrickson ULTIMAAX ,Rubber mounted tandem with walking beam.  
 Outriggers : Hydraulic operated H -type outriggers.

#### Axle and Wheels ( mentioned according to any standard & codes ):

Drive system type : 8x4  
 Type of Front axle , capacity : Reverse Elliot 1<sup>ST</sup> , 2<sup>ND</sup> , steering axle , Capacity: 18,295Kg  
 Type of Rear axle , capacity : 3<sup>rd</sup> , 4<sup>th</sup> full floating type ,driving axle inter wheel and inter axle differential lock. , Capacity: 27,395 Kg.

ر. مهندسين اقدم  
 عمار مصطفى عبد الرسول  
 رئيس اللجنة

ر. مهندسين  
 أيسر محمود سليم  
 عضو

ر. مهندسين  
 ماجد حاييف عبد راضي  
 عضو

ر. مهندسين  
 مخاد خليل اسماعيل  
 عضو

ر. مهندسين  
 احسان فيصل عباس  
 عضو

11/11/2021

DATA SHEET FOR TADANO GT-750EL HYDRAULIC TRUCK CRANE

**Tire size :**

Front tire : 385/65R22.5  
Rear tire : 315/80R22.5

**Brake system:**

Service brake type : Dual circuit compressed air system brake .  
Parking & Emergency : Spring loaded brake on 3<sup>rd</sup> and 4<sup>th</sup> axles , auxiliary engine exhaust brake and constant throttle engine brake.

**Steering system:**

Steering type : ZF Servocom hydraulic steering with emergency steering pump, mechanical hydraulically assisted of front two axles .

Minimum turning radius (center of extreme outer tire ) : 11.7 m

**Driver Station:**

Type of Cabin : Driver cab two man full cab , Operator cab left side one man type.  
Cabin clement control : air conditioning and heating.  
Mirrors : 4 mirrors ( 2 for driver cab , 1 for operator cab , 1 for winch drum).  
Driver's seat Adjustable, seat belt : various adjustments , air cushioned.  
Steering Adjustable column : Tilt telescopic steering wheel  
Horn type : Electrical type.  
lamps : front fog lamp  
Moment limiter :Automatic moment limiter (AML-C).including all: necessary instruments , indicators, monitoring systems,levers,pedals,gauges,switches and lamps.

**2 - Super structure( crane ) :**

Operated by same carrier engine.

**Power take off:**

Designed torque can Power take off (PTO) transmit : by switch bottom inside cab.

**Boom:**

Main boom ( sections & type ) : 5 section full power , partially synchronized telescoping boom of round box construction with 6 sheaves at boom head  
Fully retracted length : 12.0 m  
Fully extended length : 47.0 m  
Extension speed : 35 m in 154 s  
Sheaves at boom head : 6 sheaves at boom head.  
Main Boom cylinders : 1 telescopic cylinder.

**Hoist:**

Hoist main winch: variable speed type with grooved drum driven by hydraulic axle piston motor through speed reducer. Power load lowering and raising.

Hoisting motor type : hydraulic axial piston motor.

Pull : maximum single line pull:73.3kN , max. permissible line pull wire strength:71.9 kN  
Line Speed (winch up ) :155 m/min (7<sup>th</sup> layer)

ر.مهندسين اقدم  
عمار مصطفى عبد الرسول  
رئيس اللجنة

ر.مهندسين  
ايسر محمود سليم  
عضو

ر.مهندسين  
ماجد حاييف عبد راضي  
عضو

ر.مهندسين  
مخاد خليل اسماعيل  
عضو

ر.مهندسين  
احسان فيصل عباس  
عضو

Hook speed (winch up) : Hoist-up speed 128m/min (4th layer).  
 Hoist auxiliary winch: variable speed type with grooved drum driven by hydraulic axle piston m motor through speed reducer. Power load lowering and raising  
 Hoisting motor type : hydraulic axial piston motor.  
 Pull KN : : maximum single line pull:73.3 kN , max. permissible line pull wire strength:71.9 kN.  
 Line speed (winch up) : 155 m/min (7<sup>th</sup> layer).  
 Hook speed (winch up) : Hoist-up speed 110m/min (2nd layer)  
 Wire rope : Nuflex wire (no spin), extra improved plow steel , performed , independent wire rope core 19mm.  
 Main winch type : Variable speed type with grooved drum driven by hydraulic axle piston motor.  
 Diameter : 0.362m .  
 Length : for main drum 253 m  
 Auxiliary winch type : Variable speed type with grooved drum driven by hydraulic axial piston motor  
 Diameter : 0.362 m  
 Length : 139 m  
 Hook block capacity : 5.6 ton, 35 ton and 75 ton.

#### Swing system:

Swing motor Type : hydraulic axial piston motor driven through planetary speed reducer ,Continuous 360 full circle slewing on ball bearing.  
 Swing brake : Manually locked ,released slewing brake.  
 Swing speed ( rpm ) : 1.8 rpm  
 Swing lock : a positive swing lock for travel modes, manually engaged in cab.  
 Tail swing radius : 4060 mm

#### Hydraulic system:

Boom elevation cylinder type : By a double acting hydraulic cylinders with holding valve.  
 Boom angle indicator.

Boom angle ..... -1.6°– 80.3°

Boom raising speed ..... 20° to 60° in 46 s

Quantity : 1

Arm cylinder type : the synchronization system consist of 2 Telescopic cylinder.

Quantity : 2

Hydraulic motor drive( Quantity & type ) : 3 and axial piston motor.

Boom elevation Oil pump type : variable piston pumps

Discharge of oil pump : Hydraulic pump (P2) : Displacement : 100.3cm<sup>3</sup> \*P2 operating Telescoping, elevation.

Max. pressure of oil pump : Hydraulic cylinder for elevation : Working pressure 24.5Mpa.

#### Operator Station:

Type of Cabin :left side , one man type, steel construction with sliding door access and safety glass window opening at site , door window is powered control.

Cabin clement control : hot water cab heater and air conditioning

Mirrors :one mirror.

Driver's seat Adjustable, seat belt : 3 way adjustable operator seat

lamps : monitor lamps, external warning lamp.

and all instrument & indicators, Levers, Pedals, Gauges, Switches, Lamps

ر. مهندسين اقدم  
 عمار مصطفى عبد الرسول

رئيس اللجنة

ر. مهندسين  
 ايسر محمود سليم

عضو

ر. مهندسين  
 ماجد حاييف عبد راضي

عضو

ر. مهندسين  
 مخلد خليل اسماعيل

عضو

ر. مهندسين  
 احسان فيصل عباس

عضو

DATA SHEET FOR TADANO GT-750EL HYDRAULIC TRUCK CRANE

Stamp and signature area with handwritten text and a date stamp: 8/11/2020.

Safety devices : AML-C aids in place of good operating practice can cause an accident, the operator must exercise caution to assure safety , windshield glasses window and roof glasses window are shuttle resistance.

**Truck crane Measurement:**

Overall length : 14,180 mm  
 Overall width : 2,800 mm  
 Overall height : 3,740 mm  
 Wheel Base : 1498 mm + 3991mm + 1422mm .  
 Gross vehicle weight ( G . V . W ) : 45,690 kg  
 Center to center of extended outriggers :  
 Min. Extension 2.51 m center to center  
 First Mid. Extension 4.7 m center to center  
 Second Mid. Extension 6.5 m center to center  
 Max. Extension 7.0 m center to center

**Additional equipment:**


Set of catalog for (maintenance & spare parts , operation (user) guide ) & spare tire


*Year of manufacture : Year by year according to order .*


And all necessary TADANO standard equipments.


DATA SHEET FOR TADANO GT-750EL HYDRAULIC TRUCK CRANE


~~SADAB~~  
 MACHINERY  
 8/11/2021

  
 ر. مهندسين اقدم  
 عمار مصطفى عبد الرسول  
 رئيس اللجنة

  
 ر. مهندسين  
 ايمن محمود سليم  
 عضو

  
 ر. مهندسين  
 ماجد حاييف عبد راضي  
 عضو

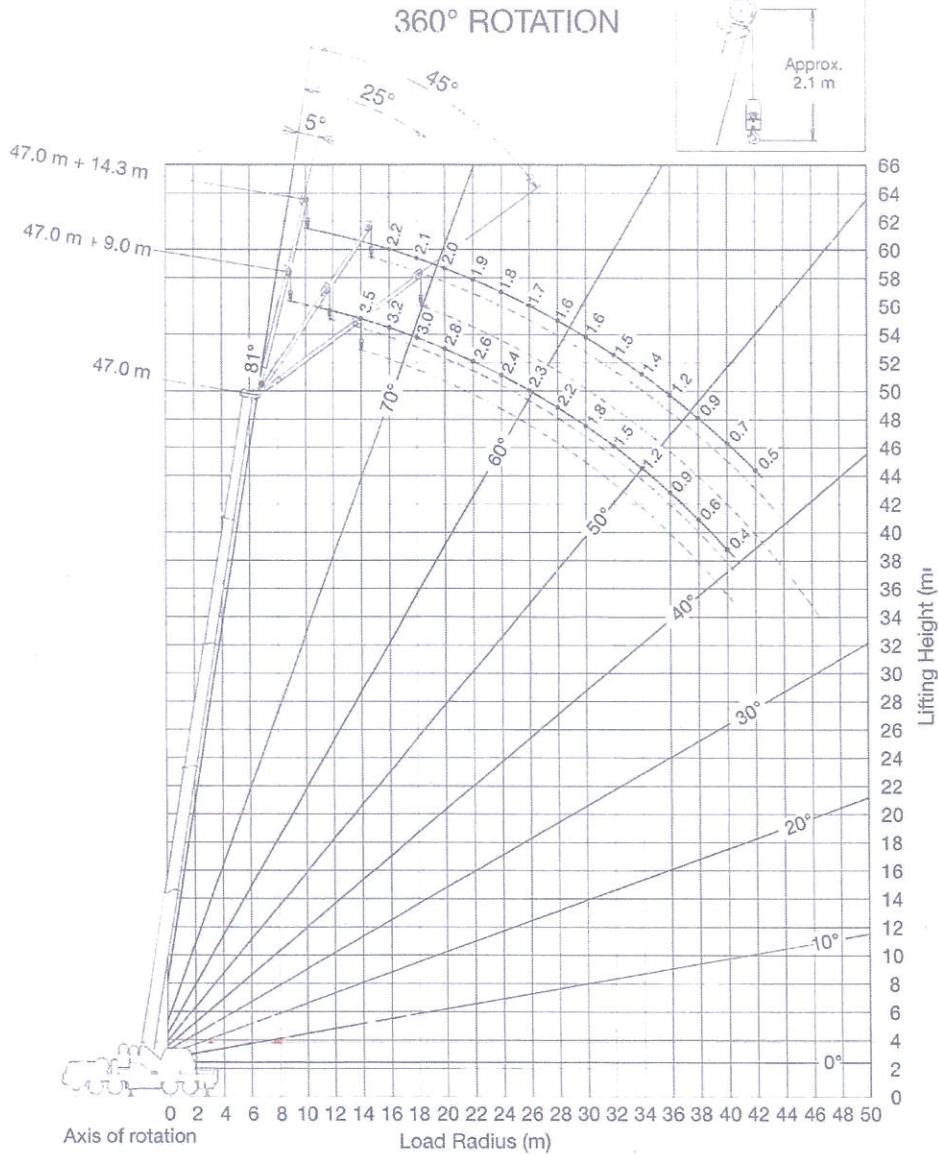
  
 ر. مهندسين  
 مaged خليل اسماعيل  
 عضو

  
 ر. مهندسين  
 احسان فيصل عباس  
 عضو

# GT-750EL WORKING RANGE CHART

5-6

JIB



NOTE: Lifting height shows a calculated value.  
When boom length is same as telescoping mode I and II it show large load.

**SARCAR**  
MACHINERY

Handwritten signature and date: 8/11/2021

ر. مهندسين اقدم  
 عمار مصطفى عبد الرسول  
 رئيس اللجنة

ر. مهندسين  
 ايسر محمود سليم  
 عضو

ر. مهندسين  
 ماجد حاييف عبد راضي  
 عضو

ر. مهندسين  
 مخلد خليل اسماعيل  
 عضو

ر. مهندسين  
 احسان فيصل عباس  
 عضو

