

Data Sheet for Hino 500 Series
FM8JR7A-SG3.(6x4)
Hino Fuel Tanker 16,000 Ltr

Chassis Model : Hino 52827	
Chassis Code : FM8JR7A-SG3.	
Year Model : 2022 or newer .	
Country of Manufacturer: Japan For Chassis & UAE (JOREFCO) For fuel Tanker.	
Dimensions	mm
Overall Length (OL)	9,485
Overall Width (OW)	2,490
Overall Height (OH)	2,785
Wheel base (WB)	4,630+1350
Weights	Kg
Vehicle mass	7,175
Loading capacity (Payload)	20,825
Rating Gross Vehicle Mass (GVMR)	28,000
Engine	
Model & Emission	HINO J08E-WH- EURO3
Type	Diesel ,Turbocharged and intercooled , 4cycle , in-line 6 Cylinder, overhead camshaft, water cooled . Suitable for weather and dusty area in Iraq.
Combustion system	Direct injection type
Displacement (L)	7.684 L
Compression ratio	18.0 : 1
Maximum Power /Speed	195 kW (265PS) @2,500 rpm (JIS Gross) 191 kW (260PS) @2,500 rpm (ISO Net)
Maximum Torque /Speed	804 Nm (82kgfm) @1,500 rpm (JIS Gross) 794 Nm (81kgfm) @1,500 rpm (ISO Net)
Fuel System(Fuel injection pump)	Electronic control, common rail type.
Clutch	
Type	CSP-380, dry single plate with damper springs.
Gear Box	
Model	M009, manual 9-speeds, synchromesh ,Direct drive .
Axles	

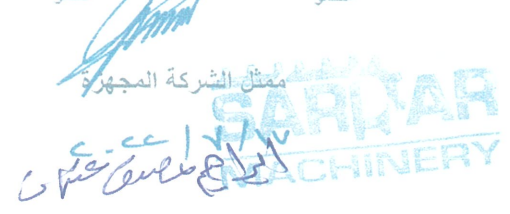
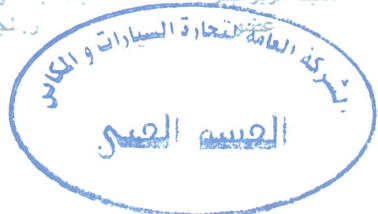
ر. مهندسين اقدم
 نجم عبد شهبوب
 ر. لجنة

ر. مهندسين اقدم
 ماجد عزيز حيدر
 عضو

ر. مهندسين اقدم
 محمد عباس حسين
 عضو

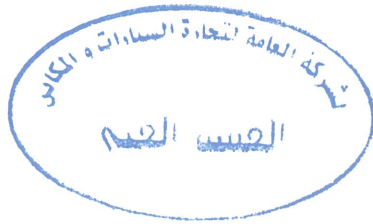
ر. مهندسين اقدم
 محمد خليل اسماعيل
 عضو

ر. مهندسين اقدم
 نديم محمود شاكر
 عضو



Data Sheet for Hino 500 Series
FM8JR7A-SG3.(6x4)
Hino Fuel Tanker 16,000 Ltr

Fuel filter	Equipped with pre-filter and Sedimenter.
CABIN	
Type	Forward control, all steel welded construction with torsion bar tilt mechanism ,Semi floating (rubber mounting) .
Seating capacity	Three
Driver seat	High-back 750mm, 8-way adjustable seat .
Seat cover	Vinyl Cover
Seatbelt	Equipped with ELR (Emergency Locking Retractor) and warning
Sun visor	Equipped (Driver side)
Windshield wiper	2-speed with wash and intermittent .
Outside rear view mirror	Equipped .
Air condition	Equipped .
Car Audio	AM/FM radio with CD player.
Cigar lighter	Equipped.
Door Lock	Equipped .
Power Window	Equipped.
Instrument	
Speedometer	Equipped (Km/h).
Tachometer and over run warning	Equipped with buzzer.
Fuel gauge	Equipped.
Coolant level warning	Equipped.
Air pressure gauge	Equipped.



ر. مهندسين أقدم
 لجد عبد شهبوي
 ر. لجنة

ر. مهندسين أقدم
 ماجد عزيز جبر
 عضو

ر. مهندسين أقدم
 محمد عباس حسن
 عضو

ر. مهندسين أقدم
 مخلد خليل أسماعيل
 عضو

ر. مهندسين أقدم
 تديم محمود شاكر
 عضو

ممثل الشركة المجهزة
 SARFAR
 MACHINERY

Data Sheet for Hino 500 Series
FM8JR7A-SG3.(6x4)
Hino Fuel Tanker 16,000 Ltr

TECHNICAL SPECIFICATION SHEET

16,000 LITERS FUEL TANK – JOREFCO

ملاحظة: الجزء التخصصي ترك قبول مواصفاته الى الجهة المستفيدة وليس من مسؤولية اللجنة.

1. TANK BODY SPECIFICATIONS:	
Volume	: 16,000 LITRES
Empty Tank Weight	: 3,500 Kg
Shape	: Elliptical Profile
Compartments	: One(1)or Single Compartment Only
Body Construction	: All welded steel construction to specification ASTM Gr. A36S275JR/ST37-2or Equivalent.
End Dishes	: 4mm MS plate rolled /dipped &flanging electrode welded Standard Fabrication.
Shell/ Baffles/Pad Plates/ Saddles/ Saddle Cover Plate	: Shell 4mm MS plate rolled as per drawing and 5mm. Pad Plates/6mm. Saddles ,Baffles 4mm.thk. MS Plate. Sufficient number baffles with open at top and bottom for venting and fuel levelling. Plates have manhole of 500mm. diameters opening for access between the baffles.
Tank Fittings	: Manhole:1 No. with an opening Of 10"and over all opening of 20". Fill Cover has appositve self-aligning seal ensuring pressure tight operation. Automatic venting Through pressure /vacuum vent built-in to fill cover automatic scaling of vent incase of tank over turning. Cover sare self latching. Forward motion of vehicle allows closing and latching of covers if in advertently left open.

شركة العامة لتجارة السيارات والمكابح
القيس القوي

ر. مهندسين أقدم
محمد عباس حسين
عضو

ر. مهندسين أقدم
ماجد عزيز جبر
عضو

ر. مهندسين أقدم
محمد خليل أسما عيل
عضو

ر. مهندسين أقدم
لديهم محمود شاكور
عضو

ر. مهندسين أقدم
نجد عبد شهبوي
ر. لجنة

ر. مهندسين أقدم
ممثل الشركة المجهزة


Page 4 of 7


17/11/2017
الراعي شهبوي


Data Sheet for Hino 500 Series
FM8JR7A-SG3.(6x4)
Hino Fuel Tanker 16,000 Ltr


Welding	: Tank External - Shield Metal Arc Welding using Flux covered Electrode E7016&E7018 Qualified AWS Welders as per ASME Section IX. Plate thickness 1.5mm.-12mm.Process in 3G Position Certified by VELOSI. Tank Internal -Baffle/Shell MIG Welding using ACM (Argon-CO2Mixture) gas for better bead appearance &penetration / strength. Welding. Processing 3G Position.
Emergency Valve	: One(1)No.3"Emergency Valve (Equip tank-Spain/BETTS) fitted with pneumatic control block To operate and automatically shutting off fuel in case of failure or accident. Fuel Unloading discharge , through a 2" pipe line and Pneumatic emergency valve with 'Y' Strainer.
Pump	: Black mer PTO Driven Pump with built in relief and by pass Assy. Suitable for Diesel, Size 1.5"x1.5",243LPM.
Hose Reel	: One(1)automatic spring rewind hose reel with 1"x15m hose and a discharge nozzle Gun.
Flowmeter	: FILL RITE (Mechanical Flowmeter) ,Size 1.5x1.5" Connected to the Pump. 151 Liters per minute.
Method of Loading	: TOP ONLY.
Hose Stowage with Hose	: Two (2) Stowage Circular type PVC Pipe -one on each side of the tank.


2. ELECTRICALSYSTEMS:


 ر. مهندس اقدم
 نجد عبد شهبوب
 ر. لجنة


 ر. مهندس اقدم
 ماجد عزيز جبر


 ر. مهندس اقدم
 محمد عباس حسين
 عضو


 ر. مهندس اقدم
 محمد خليل اسماعيل
 عضو


 ر. مهندس اقدم
 تديم محمود شاكر
 عضو

شركة بعامة التجارة المساهمة والمكاتب
القطيف الصناعية

ممثل الشركة المجهزة
GARDIAR MACHINERY
 ابراهيم محمد عثمان

Data Sheet for Hino 500 Series
FM8JR7A-SG3.(6x4)
Hino Fuel Tanker 16,000 Ltr

Lights	Original Rear lights and rear signal lights will be used.
Wiring	Original chassis wiring will not be altered only supply wiring will be added For the mechanical and electrical accessories.
3. ACCESSORIES:	
Body Accessories	<ol style="list-style-type: none"> 1.) Walk way at the top of the tank by GI Grating. 2.) Access Ladder at the tank rear. 3.) Lights with brackets, 5Nos.perside. 4.) MS Steel Mudguard with Flaps on Rear Axles. 5.) Rear Bumper with Reflective sticker. 6.) Side Bumper . 7.) Beacon light-1 No.attanktop. 8.)1 No.Fire Extinguisher (Dry Powder) 6Kgs. With PVC Box with lock-2 Nos. 9.) 2" Strainer 'Y' Type 10.)(Earthing Lug)-1 No.
4. PAINTING:	
Internal	: Cleaned and Diesel washed
External	: One(1)coat of epoxy primer and Two (2) coats of finish painting single color

ر. مهندسين أقدم
 نجد عبد شهبوي
 ر. لجنة

ر. مهندسين أقدم
 محمد عباس حسين
 عضو

ر. مهندسين أقدم
 خالد خليل اسماعيل
 عضو

ر. مهندسين أقدم
 نديم محمود شاكر
 عضو

ممثل الشركة المجهزة

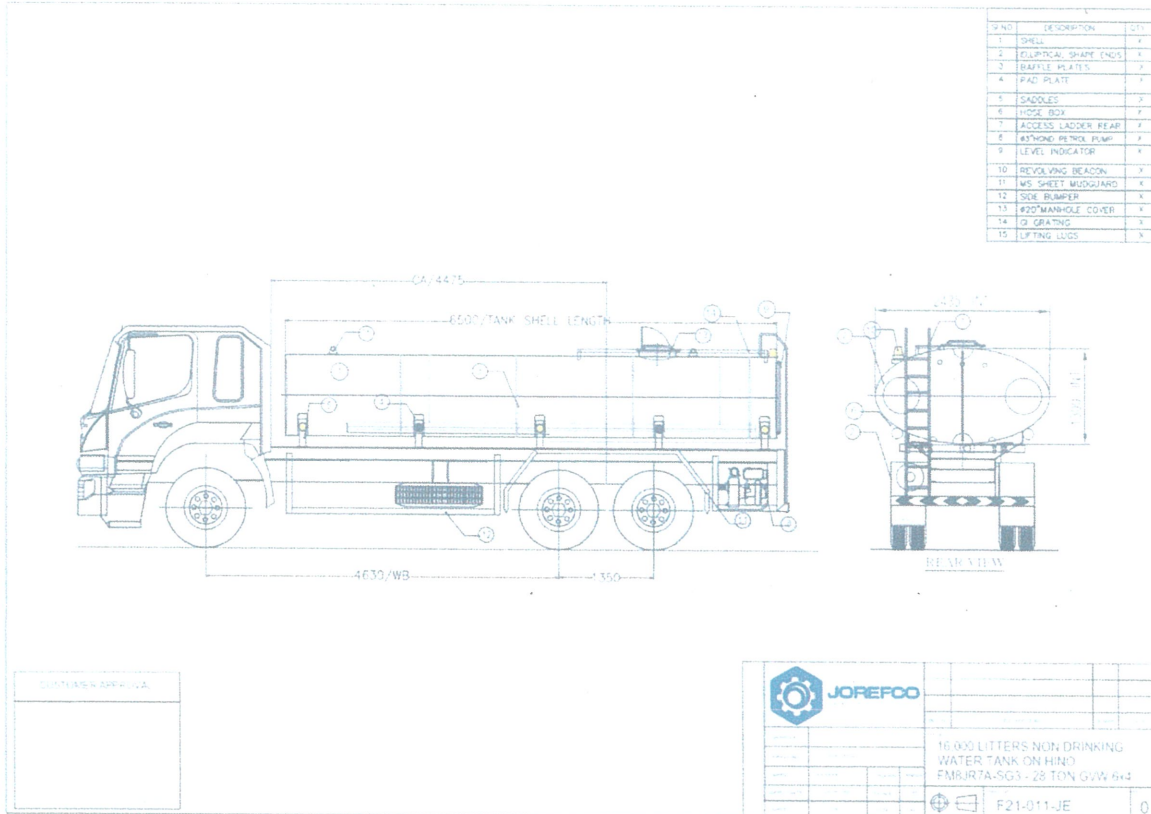
Page 6 of 7

ر. مهندسين أقدم
 نديم محمود شاكر
 عضو

ممثل الشركة المجهزة

Page 6 of 7

Data Sheet for Hino 500 Series
 FM8JR7A-SG3.(6x4)
 Hino Fuel Tanker 16,000 Ltr



ر. مهندسين أقدم نجم عبد شهبوي ر. لجنة
 ر. مهندسين أقدم ماجد عزيز جبر عضو
 ر. مهندسين أقدم محمد عباس حسين عضو
 ر. مهندسين أقدم مخد خليل أسماخيل عضو
 ر. مهندسين أقدم تاديم محمود شاكر عضو

ممثل الشركة المجهزة
 ٧/١٤٤٥ هـ
 إبراهيم عيسى عثمان